

# BULLETIN



East Bentleigh  
Primary School

[www.eastbentleighps.vic.edu.au](http://www.eastbentleighps.vic.edu.au)

Phone 9570 3525

Email: [east.bentleigh.ps@edumail.vic.gov.au](mailto:east.bentleigh.ps@edumail.vic.gov.au)

Term 4 / Week 7 : 21st Nov 2019

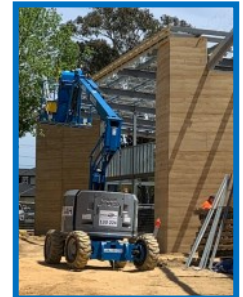
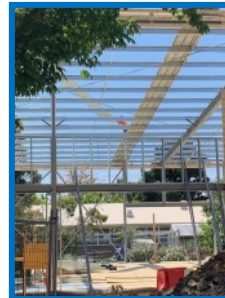
**SCHOOL VISION:** East Bentleigh Primary School provides a rich, inviting, child-focused environment ensuring that all students feel safe and stimulated. Our students are able to achieve their full academic, creative and social potential, equipped for the challenges of lifelong learning. Students develop into healthy and confident individuals, actively contributing to the world in which they live.

**At East Bentleigh Primary School we are committed to child safety.**

Hello everyone,

### Capital Works

At our project meeting this week we were advised that now that our beautiful rammed earth feature walls are complete we will see lots of things happen quite quickly. There was a moment of excitement yesterday as the first of the massive roofing sheets were hoisted up to the top of the structure in preparation for laying, with windows due to appear early next week.



### Prep M - Wonderful Writers

Yesterday I had a very proud Mr. McCallum come to my office to show me some fantastic pieces of writing from some of his students.

All pieces were very different, demonstrating the emerging confidence of each of the writers. Well done Tamsin, Alby and Marley. I think we have some budding authors in the making. I'm really looking forward to seeing some more from our Prep authors in the next few weeks.



### Bentleigh Farmers' Market

A reminder that our next market is on THIS Saturday between 8am and 12:30pm. It is also Taraleigh's St. Nick Fair day, so our school is certainly the place to be. Many thanks to the veritable army of volunteers who respond to Heidi's plea for help each month. We really couldn't do it without you. If you are interested in helping out, there are just a few spots to fill - please let Heidi or the office know.

### Student Leadership

A reminder to our aspiring Year 5 students that your written applications for student leadership positions for 2020 are due in to me by tomorrow morning. Good luck to all of our aspirants. Candidates for student leadership positions will be giving their speeches on Friday 29<sup>th</sup> November at 11:30am.

### AED

As part of our commitment to safety for all community members we have purchased an AED (Automatic External Defibrillator) for our school. It is located just near the entrance of our Block A - just outside the school office.

Until next time.....*Maria Shearn - Principal* 😊



**THANK YOU - Wear Red Day  
raised \$424.00!**  
**This money will be sent to the Red Cross  
to support their Homelessness Programs.**

*Year 6 Student Leadership Group - Community*

### LOST GARMIN - Watch Face

Lost Garmin watch face, last week near the fireman's pole in the playground next to the chook house.

The name "Imogen" has been programmed into the Garmin.

Any help would be greatly appreciated.

If found - please hand into the school office. Thank you Anna

East Bentleigh Primary School acknowledges Traditional Owners of Country throughout Australia and recognises the continuing connection to lands, waters and communities. We pay our respect to Aboriginal and Torres Strait Islander cultures and to Elders both past and present.

