

## Principal's Report | - 2

This week in the Principal's Report the following topics are covered:

- \* Parental Issues
- \* Student Absence Reminder
- \* Dropping children off
- \* Woodworking Program
- \* Mother's Day Stall
- \* School Uniform
- \* Education Week/Open Day/BFM
- \* Bentleigh Farmers' Market
- \* School Council News
- \* NAPLAN

## BREAKFAST CLUB IS HERE!

8:15-8:45am

in new Performing Arts  
Centre (PAC)

**If your child has allergies—  
please email**

[jane.ross@education.vic.gov.au](mailto:jane.ross@education.vic.gov.au)  
**before they attend.**

## Reporting Student Absences

**Please remember to let the  
school know by 9am if your  
child will be absent.**

**Please call or email the school  
office on Ph: 9570 3525 Email:  
[east.bentleigh.ps@education.vic.gov.au](mailto:east.bentleigh.ps@education.vic.gov.au)**

**You must also provide a  
reason for the absence so that  
we can accurately record it.**

**\*\*A signed note by you is also  
required - to be handed to the  
class teacher for each  
absence. Thank you**

## Diary Dates

Yr5/6 Winter Sport Lightning  
Premiership - Friday 30th April  
9am-2pm

4A & 4L Ricketts Point Excursion -  
Monday 3rd May 9am-12:15pm

EBPS Cross Country - Year 3-6  
Monday 3rd May 2pm-3:15pm

Mother's Day Stall - Friday 7th May

Year 4 Creswick Camp -  
Wed 12th - Fri 14th May

NAPLAN Year 3 - 5 11th -13th May

Year 3 Camp Manyung -  
Mon 31st May - Wed 2nd June



# East Bentleigh Primary School

Bignell Road  
East Bentleigh 3165  
Phone: 9570 3525 Fax: 9579 0205  
Email: [east.bentleigh.ps@edumail.vic.gov.au](mailto:east.bentleigh.ps@edumail.vic.gov.au)

29th April 2021

Term 2 / Week 2, Issue 1

## SCHOOL VISION:

*East Bentleigh Primary School provides a rich, inviting, child-focused environment ensuring that all students feel safe and stimulated. Our students are able to achieve their full academic, creative and social potential, equipped for the challenges of lifelong learning. Students develop into healthy and confident individuals, actively contributing to the world in which they live.*

**At East Bentleigh Primary School we are committed to child safety.**

## Principal's Report - Maria Shearn

Hello everyone,

I hope this newsletter finds you well and enjoying the beautiful sunshine that the season of autumn has brought us over the past few days. It has been lovely to witness the children settling back into the familiar routines of their school days with such alacrity. As I write this I am delighting in watching Madame Carmen conducting a French class with Class 5 under our welcome tree in the garden between the main building and PAC, as well as hearing the delighted squeals of some of our Prep M students during their PE sessions.

I must also say how pleasing it is to see most classes well and truly settled by the time the 9am bell goes in the past few days. Thank you parents for your efforts in prioritising punctuality. You are strongly supporting the development of good life skills in your children.

After school activities have begun in earnest for the term, with our very first tennis session on Monday night, Chess Club with Felix on Tuesday night; Art Workshops with Yaz and Sonia on Wednesday nights and the reintroduction of our community favourite our Thursday Market on Thursdays (fortnightly) in term 2. A good way to keep track is to remember 'odd' weeks (Week 1, week 3, week 5, week 7, and week 9) to help you in your planning. It was lovely to have such a strong positive response, despite the threatening weather, with so many smiles and "welcome backs" at the bbq last week.



## Parental Issues

A reminder to all parents that if you have any concerns or queries about any issue pertaining to the school's operations please come and see me personally, or our Assistant Principal Sue Jackson to discuss the matter. All discussions are kept in the strictest confidence but will be followed up and dealt with.

In such a busy, vibrant community where there are thousands of interactions daily there sometimes can be misunderstandings or plain misinformation floating around, so I urge you to follow up with us personally if you have any concerns at all. Should we be unavailable and your concern/question is not urgent, you can also leave a message with Ann or Jane in the office and we will get back to you as soon as possible. **As an addition to this advice, I would also add that parents please refrain from speaking to any children (other than their own of course) about any issues/incidents. Should you have any concerns please speak either to your child's teacher and/or Sue or I who will follow up any concerns.**

*Continued next page.....*



East Bentleigh Primary School acknowledges Traditional Owners of Country throughout Australia and recognises the continuing connection to lands, waters and communities. We pay our respect to Aboriginal and Torres Strait Islander cultures and to Elders both past and present.

## Principal's Report - Maria Shearn

### Student Absence Reminder

A reminder to all of our families that we need you to inform us as soon as practicable (same day by 9am) of your child's absence from school for any reason. It is very time consuming for Ann in the office to have to call parents to determine the whereabouts of absent children as we are required to do as part of our duty of care to your children.

### Dropping Children Off

Parents, another reminder about dropping children off and/or picking children up out the front of the school. There are times and areas where you may park, and there are times and areas where you may not. If you need to stop even for only ten minutes, it is a good idea to park in one of the local side streets. If you do this however, please be courteous to our neighbours. We have had a spate of complaints recently about some pretty selfish and thoughtless practices such as parking across residents' driveways, particularly in Rae St. I encourage you to think how you would feel if it happened to you. If you use the 'Kiss and Go' area to drop off your child or pick up - please remember that you may not leave your car at any time and can only park there for 2 minutes. Also please remember that the staff car park is for staff only - it is not a dropping off or picking up area.

### Woodworking Program - Welcome back to Michael Zeeng

I am delighted to welcome back Michael Zeeng to our volunteer team here at EBPS. Michael is a retired postman/hobby handyman extraordinaire, who will be working with some of our mostly senior students in our woodworking program. Michael began his program on Wednesday this week working with 3 groups of students throughout the day. The students will attend all term and learn the skills to make useful wooden items such as tool boxes, planter boxes and garden furniture mainly from recycled materials.

**Mother's Day Stall** A reminder to all of our children and dads that our annual Mother's Day Stall will be on **Friday 7<sup>th</sup> May**. Gifts for the special women in our lives will range from \$1.00 to \$5.00. Many thanks to Jodie Goldfinch and her team who have been making all the preparations for the stall next week.

### School Uniform

A reminder that all children are expected to attend school in **correct** school uniform on **all** days unless advised for a special event, such as the 'House Cross Country' being held next Monday, 3<sup>rd</sup> May. Whilst we tend to have a more relaxed view about uniform at our school, this does not stretch to non-uniform items. A copy of our uniform policy is available on our website. Since the short time we have been back this term I have noticed a growing number of some of our children out of correct uniform. There are many variations of correct uniform to wear designed to suit the needs of all of our children, so I ask you to ensure your child is in correct uniform **every** day. Uniform orders may be emailed to the office and purchase placed in your child's bag. Please don't hesitate to speak to either Ann or Jane in the office should you have any uniform questions.

### Education Week/Open Day/BFM

After a hiatus in 2020, Week 5 is once again Education Week May 17<sup>th</sup> to 22<sup>nd</sup> at our school. Whilst in previous years we have always had a wide range of special activities planned over the week, we will have a much more scaled down version this year which will incorporate tours for prospective parents, a prep 2022 information evening and lastly our traditional Open Morning which will be on the same day as our monthly Bentleigh Farmer's Market on Saturday May 22<sup>nd</sup>. Please put these dates in your diaries.

**Bentleigh Farmers' Market** Congratulations to everyone involved in a most successful market last weekend. The weather gods were once again kind and we had just on 900 shoppers through our gates. Well done to our hardworking Bentleigh Farmers' Market committee members and our wonderful parent volunteers who helped make the morning such a success - the market simply would not exist without our continued parental support. THANK YOU.

**School Council News** At our school council meeting last Monday night I presented the 2020 Annual Report. You can view this report on our website. Due to the nature of the 2020 school year due to the pandemic it is quite a scaled down document in terms of available empirical data, however the narrative sections give a better picture of the life of our school during 2020.

### NAPLAN

The children in Grades 3 and 5 will participate in these National assessments on Tuesday 11<sup>th</sup>, Wednesday 12<sup>th</sup> and Thursday 13<sup>th</sup> May. These tests are becoming increasingly important for schools and there is much debate about how schools are dealing with NAPLAN. At EBPS we have been giving the children an opportunity to complete some practice tests in order to familiarise them with the format and structure of them. Later in the year parents will receive a report describing their child's skills in reading, writing, language conventions and numeracy. The report will also describe how children performed against National benchmarks. As I always say when we complete this type of assessment, it is important these tests are seen as a part of a detailed picture of children's strengths and needs which includes school based assessments as well, which in turn helps us to plan and deliver our teaching and learning.

***\*\*Thought\*\****

*Coming together is a beginning, staying together is progress and WORKING together is SUCCESS - Henry Ford*  
**Until next time.....Maria Shearn - Principal**



# Maths at EBPS



This week we are taking a look at.... **Multiplicative Thinking**

### **What is multiplicative thinking?**

It is the capacity to work flexibly with the concepts, strategies and representations of multiplication (and division) as they occur in a wide range of contexts.

### **What does this mean in the classroom?**

We begin to introduce the concept of multiplicative thinking through concrete (using materials) and representational (using images such as arrays) examples. Supporting the children to develop the following key aspects:

- groups of equal size
- the number of groups, and the total amount

As students progress they learn a range of mental strategies to solve multiplications before multiplication facts are promoted and written formal methods such as long multiplication are introduced.

### **What does this mean at home?**

That whilst it is useful to have memorised and quick recall of the multiplication facts, multiplication is much more than this. Have patience! Multiplicative thinking is a much trickier concept for students to develop over additive thinking and many take into their teens to develop a full understanding.

Support your child to group objects into given numbers. Help them to understand the following vocabulary:

Double / doubling

Groups of, E.g. can you put the button into 3 groups of 2

Lots of

Equal groups

Be careful not to introduce written methods at home before your child is ready.

**Laura Siu - Numeracy Coordinator**





### Literacy @ East Bentleigh PS



For the past few weeks, students in Year 5 and 6 have been learning about persuasive writing. Part of this focus has been learning about the devices that can be used to make the reader believe your side of the argument. These devices include: repetition, exaggeration, emotive language, triples, rhetorical questions, anecdotes, direct speech and using imperatives.

Take a look at a piece below written by Alice in 6A. How many of these devices can you find? Her class were told that all students in Year 5 and 6 now had to complete two hours of homework each night. This was her response.

Dear Children of the World,

This is an outrage! Why, why, WHY!? 2 hours of homework each night is too much. It takes too much time. Most high schools start with only one hour. It can cause anxiety and depression. We will be too tired the next morning and teachers would struggle to provide and correct it all in their spare time.

I, like many others have after school activities not allowing many people to do all the homework and some parents make you do chores or go outside for an hour. This alone would take up a lot of time.

Riddle me this, how many hours do Year 7's do each night for homework? One! One hour is the only time. They are required to do more if they are in extensions, but that is optional! It is outrageous how long we would have to do homework for. That's more than 800 minutes a week! Wouldn't that drive you crazy? 800 minutes! That's insane!

Studies show that 99.9% of 12-year olds that do more than one hour of homework a night develop severe anxiety and/or depression. I remember my best friend. She was pressured by her parents to do 3 hours of homework a night, first she stopped texting me, then she was so pressured by her parents that she ran away and became a clown at the circus because her true passion was comedy.

Don't you see, homework is time consuming. Homework is too much. Homework can mess with your mental health! One hour and one hour only! Stand with me and be freed from the horror, free from the work, free from the torture! Get rid of homework and the people shall unite! - Alice C. (6A)

**Jill Griffin & Amanda Kershaw - Literacy Coordinators**

## CINDERELLA PANTOMIME

On Monday the 17<sup>th</sup> May the students will be attending the timeless classic, Cinderella. This pantomime will be performed by Alpha Shows, a travelling performing group who specialise in providing entertaining and engaging shows to schools all over Australia. This will be a wonderful opportunity for our students to be part of an audience, and experience an interactive production. Themes such as self-worth are addressed in a fun and light-hearted way.





# Wellbeing @ EBPS



## GENDER EQUITY AND POSITIVE GENDER RELATIONS IS GOOD FOR EVERYONE

Who can talk about gender and healthy relationships? Kids can and they do it really well.

Topics 7 and 8 are the mandatory components of the Resilience, Rights and Respectful Relationships program set by the Victorian government in response to the Royal Commission on family violence.

The Resilience, Rights and Respectful Relationships learning materials have been designed for teachers in primary and secondary schools to develop students' social, emotional and positive relationship skills. Efforts to promote social and emotional skills and positive gender norms in children and young people has been shown to improve health related outcomes and subjective wellbeing. It also reduces antisocial behaviours including engagement in gender-related violence.

The Resilience, Rights and Respectful Relationships (RRRR) learning materials cover eight topics of Social and Emotional Learning across all levels of primary and secondary education: Emotional Literacy; Personal Strengths; Positive Coping; Problem Solving; Stress Management; Help Seeking; Gender and Identity; and Positive Gender Relationships.

Each lesson is designed to be age appropriate and engages children in some interesting and at times, lively discussion. You'd be surprised what children are aware of and how they feel problems can be solved. In my own class, both boys and girls think the idea that girls can't do the same activities, jobs, or games as boys, is stupid and they can't understand why you wouldn't respect someone's differences.

On the final day of term one, staff participated in a whole day professional development on Respectful Relationships, topics 7 and 8 and discussed why it has been mandated, watched demonstration lessons and participated in discussion, and problem solving.

Over the next few newsletters we will look at some of the activities offered for each year level and the learning linked to each of them. The following are examples from the foundation level.

### Gender Identity - Who am I? Different things to know about me

*Students think about their likes and dislikes and understand that sometimes they will like the same things as their friends and that sometimes they will like different things (and that is OK).*

*They will recognise that what they like does not have to depend on whether they are a boy or a girl.*

*They explore how some of their likes and dislikes may change as they get grow older and they may have different preferences in different situations.*

### Exploring gender: Boys and girls can be the same and different

*Through this activity students come to recognise that the games, clothes and colours that people prefer do not have to match with whether they are a boy or a girl.*

### Positive Gender Relations - Fair and friendly play

#### What is fair? What is violent?

*Through this activity students explore what is fair and what is violent. They identify the feelings people can have when they are around violence, or are when someone is violent, rough, or mean to them.*

*They work together to identify what bodily sensations people can feel when they are around violence or are the target of violence e.g. butterflies in tummy, sweaty hands etc.*

*They think how people feel when their friends play with them in a way that is friendly and fair, compared to how they might feel when their friends play with them in a way that is violent, mean or too rough.*



### **EAST BENTLEIGH CROSS COUNTRY**

#### **Monday 3<sup>rd</sup> May 2021 2:00 – 3.15pm School Oval**

2.15pm - Grade 3 – 1 Lap (1km) Boys then girls.

2.30pm - Grade 4 – 2 Laps (2km) Boys then girls.

2:50pm - Grade 5&6 - 2 Laps (2km) Boys then girls

- Students are encouraged to wear their house colours for the day. Bonus points for best dressed!
- If event is cancelled for bad weather, we will look to reschedule to the following Monday 10th May.



Dear Parents and Guardians,

I am excited to announce that **East Bentleigh Primary School** are participating in Jump Rope for Heart this year – a fantastic fundraising and physical activity program by the Heart Foundation.

By participating in Jump Rope for Heart this term, I'm expecting to get our students moving. We'll have ropes available on the school grounds and encouraging everyone to help raise funds for lifesaving research and support programs.

Over the coming weeks your child will learn new skills, increase their physical activity, and learn about heart health. The program will end with our school wide 'Jump Off Day' on **Thursday 10<sup>th</sup> June** where your child gets to show off their new skipping skills to their friends.

When you register your child online you'll get access to additional skipping resources to help give your child a great reason to get away from the screens and get outdoors. Register and create your own secure webpage at [jump rope.org.au/parents](https://jump rope.org.au/parents)

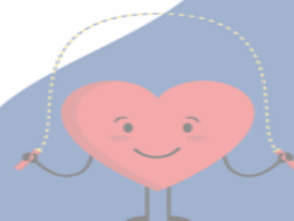
By signing up online, you and your child can:

- Easily raise funds online
- Track skipping skills progress and earn virtual badges along the way
- Post updates to your page so family and friends can follow their progress
- Access additional skipping resources

Your child should have a 'fundraising guide' flyer to take home, which includes further information on the program.

Thank you for getting involved in Jump Rope for Heart!

Yours sincerely,  
John Seeary  
PE Teacher



# MUSIC NEWS

Dear Parents/Carers,

### Lessons

***\*A reminder please that it is important that students (with help from parents) remember their instruments and music for individual lessons.***

We do have spare instruments and music but when students consistently forget and have multiple copies of music it does take time from the lesson as we rewrite fingering and other markings into multiple copies.

Another warm reminder that children will need a A4 display folder for any loose sheet music which is issued for class orchestra and lessons. I have noticed a few students with loose sheet music that often gets lost in-between sessions. As we move as a school to reduce waste and help the environment by reducing photocopying and multiple copies, I would ask that students take extra care when they receive new music.

### Guitar and Piano lessons

We do have Guitar and Piano lessons available on Tuesdays and Wednesdays taught by Matt Moras. If you would like to enrol your child in these lessons please contact Matt directly at [matt.moras@me.com](mailto:matt.moras@me.com).

### Ensembles

A reminder for students to make use of the ensembles and remember these are run via donation to our grand piano for the PAC. If you have any donations please don't hesitate to bring these to the office.

Please note I will be moving Viola Ensemble to TUESDAY lunchtime to allow more students who will have their instruments from Monday and Tuesday class orchestras.

**Violin Ensemble MONDAY 1:10 – 1:50pm**  
**\*\*\*Viola Ensemble TUESDAY 1:10 – 1:50pm\*\*\***  
**Cello Ensemble TUESDAY 3:45 – 4:30pm**

### Extension Orchestra

We would love to invite more students to audition for Extension Orchestra which runs Wednesdays after school 3:45 – 4:30pm. This is a paid ensemble, fees for Term 2 – 4 are \$100 which go to the teachers for their additional time.

***\*Auditions will be held at lunchtime on Tuesday 4<sup>th</sup> May. If you would like your child to audition or have any questions please email [felicitecheine@gmail.com](mailto:felicitecheine@gmail.com)***

**Felicite Heine -Instrumental Music Coordinator**  
[felicitecheine@gmail.com](mailto:felicitecheine@gmail.com)



## Parent Information



## BREAKFAST CLUB IS HERE @ EBPS

From 8:15-8:45am  
in the new Performing Arts Centre (PAC)  
All students are welcome

**\*\*If your child has allergies - please email  
[jane.ross@education.vic.gov.au](mailto:jane.ross@education.vic.gov.au) before they attend.**



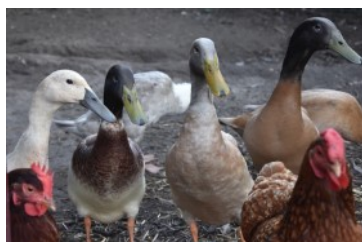
## GARDEN NEWS



We have been welcomed back to garden term 2 by a bounty of crops ready to harvest - olives, mandarins, silverbeet, lettuce and jerusalem artichokes! So many seedlings we have planted are thriving with the recent rain and sunshine and less caterpillars due to cold nights. Here are our olives picked this week:

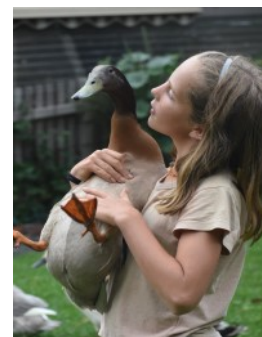


Unfortunately we lost our 4 ducks to fox attack during the holidays, and two hens have been ill (one put down). We've made a beautiful memorial to our birds using their feathers hanging under the mulberry tree. The same week we lost our ducks, Kirsty (former garden teacher) contacted me and shared photos of the ducklings her family have raised last spring from our ducks eggs so it's nice to know the offspring of Johnny, Yo Mamma, Lola and Lily live on in a happy home - what a surprise they all look so different from their white parents:



***The flock in this photo (left to right): Acacia , Thunder , Thistle, Smudge , Theodora and Tiger out the back is the original duck from the very first flock at school that Kirsty hatched!***

***Smudge being cuddled by Kirsty's daughter Lola.***



Kirsty sends a big hello to all her old students at school, she misses you a lot. For now, we will keep to our flock of 10 chickens as this is already a big number to look after and one bird species is simpler and easier to care for than two species with different needs and habits.

We have planted many bulbs to surprise us in spring, and have already replaced summer crops with kale, broccoli, peas, parsnip, beetroot, carrot, celery, broadbeans, silverbeet, rainbow chard, lettuce, spring onions, leek and garlic which we hope to harvest end of term or in term 3!

**Pascale - Garden Specialist**



## Parent Information



### THANK YOU EBPS from BENTLEIGH RSL

Thank you to all our very generous families at EBPS.



We managed to raise **\$731.50** for the Bentleigh RSL by selling their Anzac Day items.

## [engage] 1 on 1 Psychology for Young People

East Bentleigh Primary School has acquired the counselling services of Registered Psychologist **Kathy Astrinakis**, from Engage 1on1 Psychology.

Kathy is a private Psychologist who will be providing a bulk billed counselling service to the students at East Bentleigh PS who have a **referral letter** and a **Mental Health Care Plan** (item No. 2715 or 2717) from a referring GP.

The Mental Health Care Plan will entitle students to 6-8 bulk billed counselling sessions each calendar year. The counselling service will take place at East Bentleigh Primary School allowing ease of access to the service.

Please contact **Sue Jackson (or the school office)**, once a referral letter and Mental Health Care Plan have been obtained from your GP. We will then liaise with Kathy to set up an appointment time for you to meet.

### UJEB AT EAST BENTLEIGH PRIMARY



#### JEWISH LIFE PROGRAM

Shabbat, festivals, Jewish culture  
& basic Hebrew



Fun & engaging sessions with music, stories & craft  
Thursdays at lunchtime  
\$60/term (10% discount for term 2)

ENROL NOW AT [WWW.UJEB.ORG.AU](http://WWW.UJEB.ORG.AU)  
PHONE: 03 9523 6844  
EMAIL: [UJEB@UJEB.ORG.AU](mailto:UJEB@UJEB.ORG.AU)



### Taraleigh Steiner Kindergarten & Playgroup

#### Open Day

Immerse Yourself in  
Childhood Magic...

Activities, storytelling, cakes,  
chai and more!

Saturday 22nd May 10am - 2pm

90 Bignell Rd Bentleigh East 3165 | Ph. 9570 2246  
[www.taraleighpreschool.org](http://www.taraleighpreschool.org)

### Teaching kids to take responsibility for their actions

- By Jamie Farnsworth Finn



**At this age they are often aware of rules and if they break them they may try to shift the blame to others.**

Young children may often blame others for their own actions. At this age, they are often aware of rules and if they break them they may try to shift the blame to others or say it was out of their hands. However, learning to take responsibility from an early age can teach your child that she has control over her life. She may feel more invested in the choices she makes and the actions she takes because she begins to realize that she can affect the outcome of events.

Try using “we” frequently in conversation. Teaching responsibility at a young age can start by using the word “we” when speaking with your child. For example, “We put dishes in the sink after dinner,” or, “We pick up our toys before bed,” and even, “We treat others the way we would like to be treated.” This creates a home culture (how you do things in your home), which can help give your child confidence about her place in the family. Belonging to a family unit (whatever that looks like) can become a point of pride for a child. Taking responsibility at this age can center around small household tasks like helping pick up toys, washing fruits and vegetables for dinner, or even helping sort whites and darks for laundry.

Responsibility is also about others, and your child should be learning how his actions make others feel and how he affects others. Even from an early age, children can hurt each other’s feelings by name-calling or forming cliques. It’s important to teach your child that everyone has the right to their own feelings and opinions and that they are valid even if they are different from his own. Teach him that no matter what his feelings or opinions are, he does not have a right to treat others unfairly. Also teach him to apologize when he hurts another person, which allows you to show him the value of taking ownership of his actions.

Give your child the opportunity to make reparations when she hurts someone. Maybe she forgot to invite a friend to her birthday party, or she didn’t sit by a friend at lunch like she normally does.

Suggest to your child that perhaps that is the reason why her friend is upset with her and that one way to remedy that would be to apologize. Learning to say “I’m sorry” - and to mean it - is another valuable skill for your young child to learn. To help your child further her understanding of apologies, have her work on saying something after “I’m sorry” and taking steps to prevent the wrongdoing in the future. For example, if your child breaks a sibling’s toy, you could ask her to think of a way she could make her sibling feel better. An apology could be “I’m sorry I broke your toy. I know it hurts your feelings that it’s broken. Next time I’m playing with your toys I will try to be more careful.”

Children often first tell lies when they break something by accident or take something that doesn’t belong to them. How you react to your child’s wrongdoing is critical, as she may be more or less likely to continue to tell you about the wrongdoing based on your reactions. Try to remain calm and even take a few minutes to address your child if you need to. One way you can support your child’s responsibility is to tell her ahead of time that you won’t love her any less for her mistakes or accidents. Tell her you’ll admire and respect her even more if she’s honest with you from the start. For example, try saying, “I am very sorry to hear you did that, but I am pleased that you told me honestly. That was not easy to do.”

## Advertising

**Advertising Disclaimer:** We thank the many organisations/businesses that support the publication of our newsletter by paying for their advertising. Whilst the Editor checks for appropriate content, E.B.P.S. does not endorse the conduct or service and encourages parents to investigate the product or service as they would for any purchase they are contemplating. Maria Shearn - Principal



# JOIN US IN THE SPOTLIGHT

Performing arts classes for young people aged 4-18.  
Nurture your child's creativity and performing abilities while developing successful life skills like confidence, communication and teamwork.

## 21 LOCATIONS

**BOOK YOUR AUDITION TODAY**  
(03) 8199 8344

STAGESCHOOL.COM.AU @ f

Stage School Australia



### After School Sports

**KIDS PARTIES**  
sports  
bubble soccer  
nerf wars  
laser tag  
bumper cars

**FREE TRIAL**

**\$10 sessions**  
**SPRINGVALE INDOOR SPORTS**  
**9547 2555**

**5:30pm-6:30pm**  
**MON & WED**  
**AGES: 5-7 | 8-11**

**springvaleindoorsports.com.au/junior-sports**



## Specialising in Student Tuition

**NORTH SHORE**  
Coaching College

- ✓ **Classes For All Primary & Secondary Students (Prep to VCE)**
- ✓ Offers structured & challenging courses in English, Maths, General Science and Chemistry with emphasis on concepts understanding and foundation building.
- ✓ Provides weekly workbooks with excellent learning and revision materials plus practice exercises for all students enrolled in our classes
- ✓ All classes conducted by experienced teachers
- ✓ **Scholarship / SEAL program / Selective Schools** exam preparation classes with full length practice tests also available for prospective student
- ✓ Face-to-face and online, both options are available

 Excellent Value	 Proven Success	 Selective High Schools Winners	 Online / Offline Class	 Practice Exams & Techniques
--------------------------------------------------------------------------------------------------------	-------------------------------------------------------------------------------------------------------	-----------------------------------------------------------------------------------------------------------------------	---------------------------------------------------------------------------------------------------------------	--------------------------------------------------------------------------------------------------------------------

**Caulfield Campus**  
Glen Eira College  
76 Booran Road, Caulfield East  
Contact Jess on 0411 521 931  
or email [Caulfield@north-shore.com.au](mailto:Caulfield@north-shore.com.au)

**ENROLL NOW**